

# OMEGA<sup>+</sup>

MOULDING COMPANY



crés **UNLEASH YOUR**  
**CREATIVITY**

Eight new moulding collections  
to inspire the designer within



# **UNLEASH YOUR** **CREATIVITY**

**W**e are pleased to present our new collections for the 2022 fall season, designed to freshen up your walls with new looks that respond to many of the new design trends in the home decorating market.

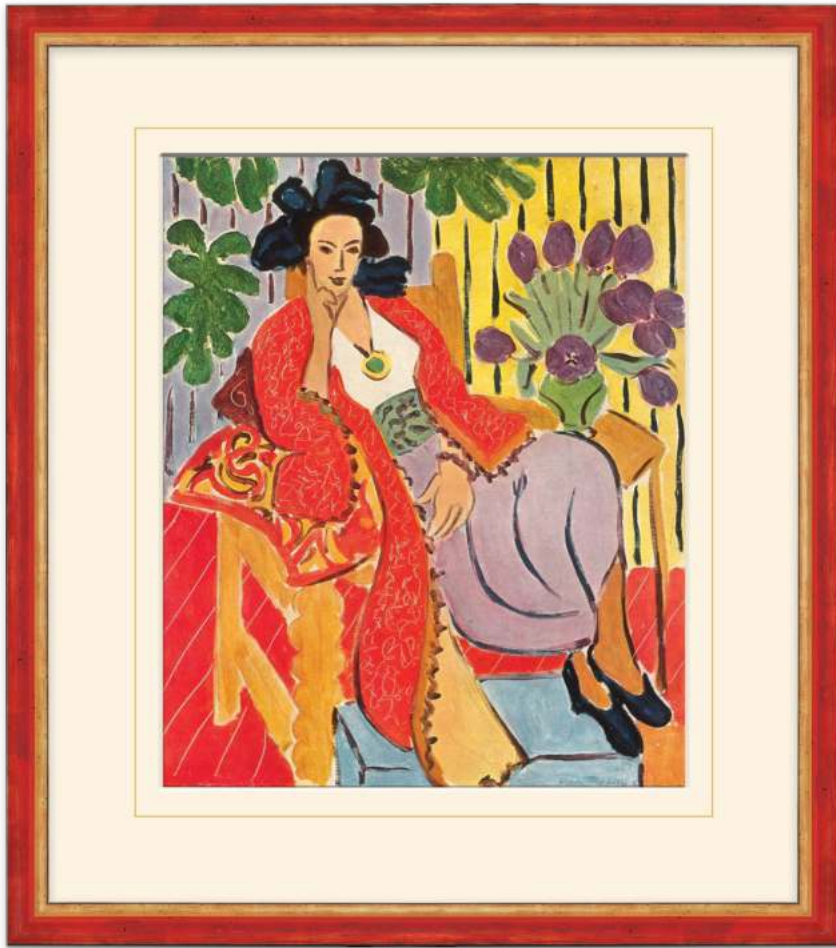
In these eight new collections you will find classic shapes that have been brought up to date with new finishes combined with some snazzy color tones to help you create that one-of-a-kind custom frame project that keeps your favorite customers returning to you.

You will love working with these new mouldings produced at some of the best factories in the world and made to meet the highest quality standards of framers who prefer working with the best materials. Although simple and modern has been the trend for years, Omega's vision for post-pandemic design trends includes warming up those cool tone rooms with gold, bronze, and some tasteful color shades.

We have applied some of the best gold and silver finishes to moulding profiles that initiate the transition from "simple-modern" of the past few years, creating a feeling reminiscent of the warmth of classic framing design of the mid twentieth century.

We hope you enjoy working with these new designs and discover new ways to use these mouldings to **Unleash Your Creativity** and surprise your customer with an awesome custom framed project.

crēs



# YORK

*York features 7 items with a small traditional profile and clean lines that is simple but far from boring. Gold, silver and plum lead the pack for their universal appeal, while its remaining castmates boast some scene stealing attraction for those seeking a touch of something new.*

*Roman Red (84250) is bold and punchy and is sure to become an instant classic, providing eye-catching interest for art that demands attention. For more sophisticated looks, Baltic blue (84254), Slate (84252), and Black (84249) each feature a silver lip and bring life to a wide array of framing designs, as well as unifying collections and creating gallery wall compositions.*

*Each of the hand-applied finishes showcase the richness of layered color and gilding. Fine brush lines provide luster and depth, enhancing each color with sublime highlights upon the wax rubbed surface.*

*This collection is ideal for customers looking for petite profiles with an original take on classic charm.*

Art (left): **Odalisque with the Red Coat**, Henri Matisse c.1937



*The York Collection is handmade in Italy*

Art (below left): **The Son of Man**, Rene Magritte c.1964

Art (below right): **Bocca Rossa**, Piero Fornasetti c.1953



### △ Gallery Gems

The combination of York's profile size and color array make for creative compositions on gallery walls by unifying shape and size while giving us seven color choices for bespoke designs.



YORK



84250



84254



84252



84249



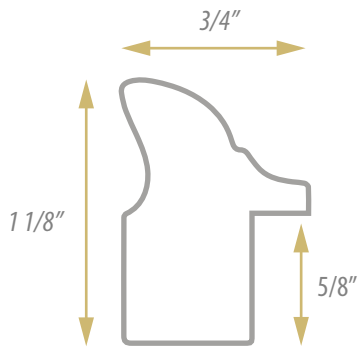
84253



84251



84255



**OMEGA**<sup>+</sup>  
MOULDING COMPANY

# EPOQUE

Designed to impress with its textural contrast and technical virtuosity, the Epoque collection will appeal to fans of warmth and texture. The highly reflective ribbon scoop panel is nestled into a profile that surrounds the fascia with a tasteful wood grain texture.

This collection elegantly connects the outside natural world with the warmth and brightness of the metallic finishes. The finished product will elevate your customer's artwork to a high level while integrating seamlessly with the more natural tones of their interior.

Epoque's lines and finishes are ideal for projects that involve decorative art period genres of the 1900's such as art deco, art nouveau, and retro modern. The fluid texture, lustrous metals, and architectural lines bring forth a graceful modernity and glamour to interior spaces as well as complementing pieces with strong lines and decorative attributes. The collection pairs well with framing designs that employ unique matting designs such as multi-level creations, textural fabric surfaces, and painted lines.

The collection is bouyed by finishes in Gold (84268), bright Silver (84265), Champagne (84267), and oxidized Gunmetal (84266). Silver and Gunmetal finishes are reminiscent of mercury glass in different ages of patina.



The Epoque Collection is handmade in Italy



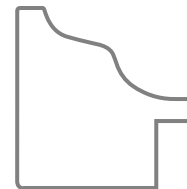
△ Art (above): *Polyanthus*, Alphonse Mucha c.1899



## ◁ Organically Speaking

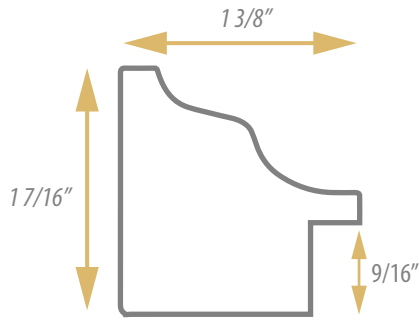
The curvy scalloped lines of Epoque's profile creates a stage for the organic silhouettes and geometric shapes seen throughout modern art in the last century. Epoque is a perfect collection to experiment with shape and light to create something totally unexpected.

◁ Art (left): *Superimposed Forms*, Jessica Dismorr c.1938





84268



# EPOQUE



84267



84266



84265

# PARKER

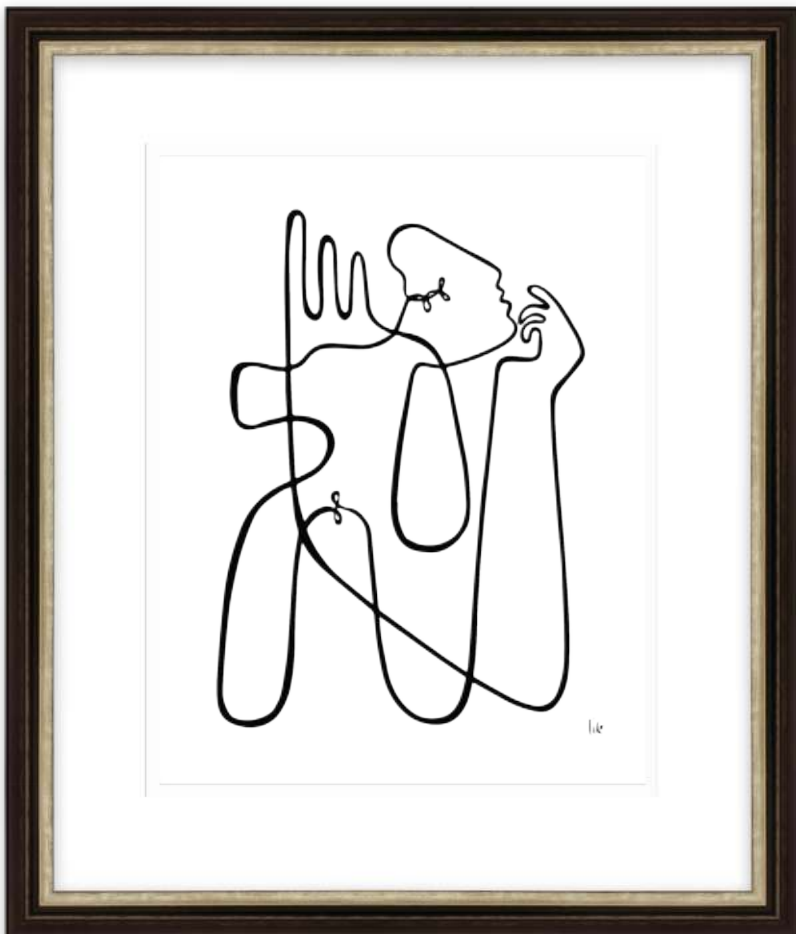
The Parker Collection gives us two looks; a handsome traditional classic with warm furniture finishes, as well as Mid-Century modern elegance. This duality is well sought after in today's market, bridging traditional interior design motifs with more modern tastes in both art and home design. Art and home accessories play an important part in helping to fuse sleek modern home tech in our interior spaces with elements that are naturally more in tune with visual appeal and comfort.

Classics that can pull off modern will make Parker a new standard "go-to" for Picture Framers and designers alike. With the most popular trends in art and home decor staying consistent with these motifs, it delivers solutions for fine art (paintings, etchings, and drawings) to contemporary (photography, serigraphs, and graphic art.)

Parker is a great companion to **Carlyle** and **York** collection mouldings. Gold, silver, black and plum selections from each can be used together in a series, on the same wall, or combined in a single design.

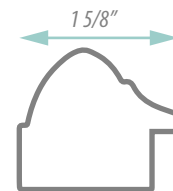


△ Art (above): **Four Dancers**, Edgar Degas c.1899



## ◁ Classic Example

By keeping it simple, a lot can be achieved in creating an undeniable winning combination that hits on style points and fits into multiple interior design settings. Staying with a clean design can be key to allow the artwork's beauty to take precedence. Scale is also important; Parker's 1 5/8" width can accommodate small and larger work both physically and visually.



◁ Art (left): **No Gravity**, Lilo c.2022



The Parker Collection is handmade in Italy





# PARKER



84247



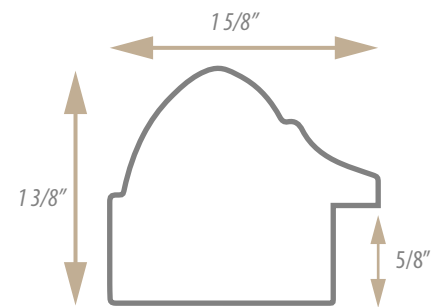
84248



84245



84246



**ΩMEGA**<sup>+</sup>  
MOULDING COMPANY

# Carlyle

*Carlyle is a traditional profile with a modern twist. The luster and sparkle of modern gilding updates the look of the classic petite scoop adding a touch of sophistication. A delicate deboss is a contemporary treatment to the traditional beaded lip of classical mouldings of past eras. These subtle adjustments in design help streamline the overall look and convey a sense of fine workmanship.*

*The new styling allows the graceful scoop to be utilized on a wider range of artwork. The metallic finishes get a softer treatment, creating a lightness to the collection's palette in order to work with today's interior color schemes and art genres such as digital prints, illustration and color/black and white photography.*

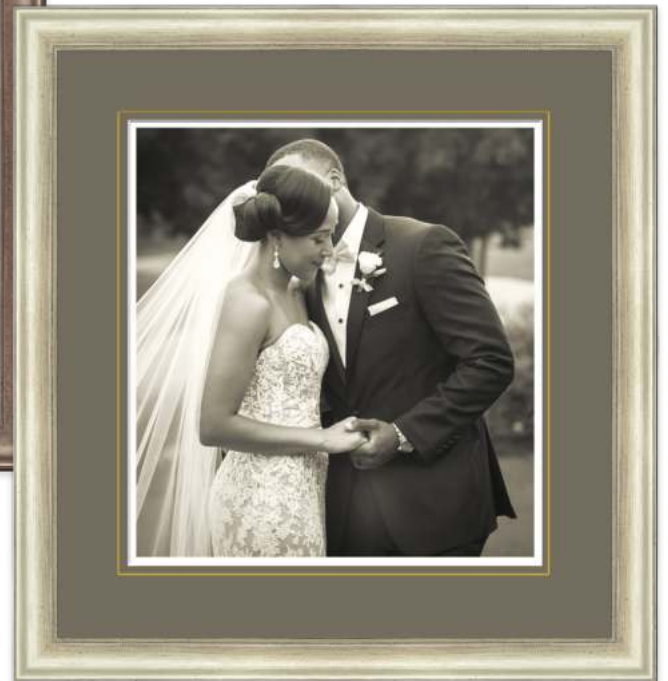
*The collection can also be used to bridge styles within a setting where more traditional art and framing are present. Carlyle is naturally a lovely collection for collectibles, antiques, documents, drawings, etchings and fine art prints. Now, it can be shared with the art and home decor in today's market. Artists and designers will now have present-day classics at their disposal to create not only something new, but something that is timeless*



Art (right): *Silver Eye, The Bell Bird*, Walter Lawry Buller c.1888 >



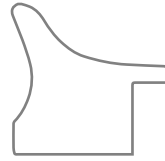
*The Carlyle Collection is handmade in Italy*



## **Classically Photogenic**

At first glance, this collection may only seem traditional, but just look at what it can do for photography. What else can you use traditional profiles for? They call them classics for a reason.

MADE IN ITALY



# Carlyle

1 1/8" scoop profile with 9/16" rabbet



84256

84257



84259



84258



84260

**ΩMEGA**<sup>+</sup>  
MOULDING COMPANY

# AVA

*Ava is an elegant collection of three items that evokes a breezy coastal feel. The collection's aesthetic is designed to allow designers to introduce more sophisticated artwork into home settings with a clean tailored look, often seen in vacation homes.*

*Eternally popular coastal design, also known as 'beachy-chic', is recognized by the use of natural textures where materials such as rope, wicker, and driftwood are commonly employed within the setting. Shades of white, watery hues and white washed wood and fabrics are popularly used in the fabrication of furniture, home accessories and artwork.*

*Ava's white brushed finish carries the collection into this style category, setting the mood with a clean and airy sensibility. The brush lines are streaked with shimmering highlights that cast reflection from light to dark to deliver its textural dynamic. Accented on the crest with crisp gold (84280), silver (84281), and navy blue (84282); a nod to the nautical Ralph Lauren coastal home design palette popularized worldwide.*



The collection's bright white finish was selectively curated for its compatibility with modern digital printing papers.



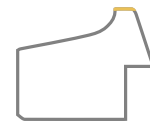
△ Art (above): *The Mirror*, Will Barnet c.1981



◁ Art (left): *Agave*, K. Nari c.2018



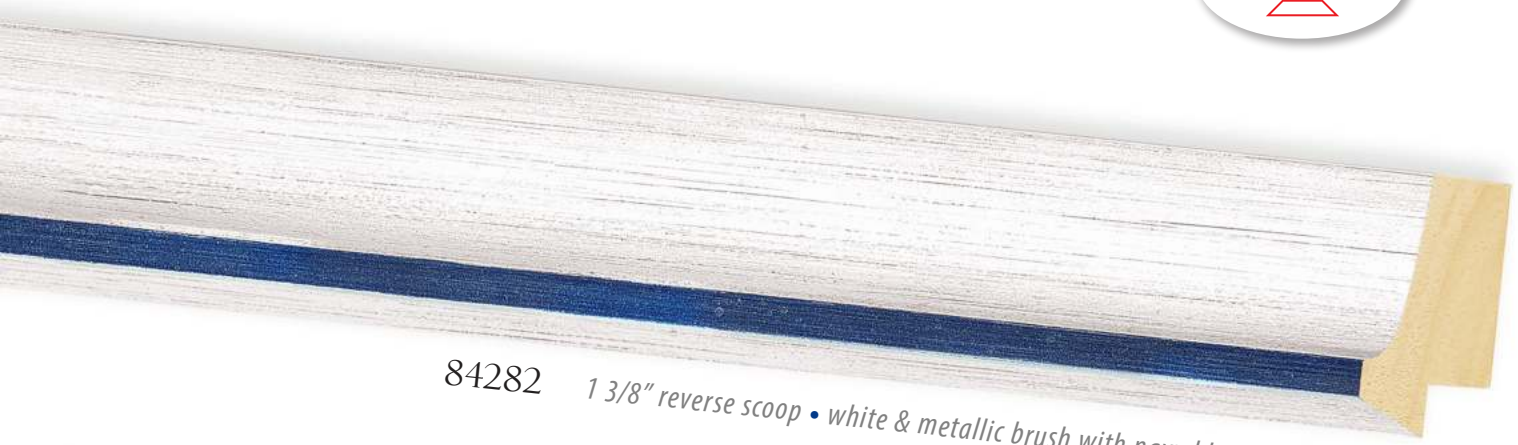
*The Ava Collection is handmade in Italy*



#### ◁ **Warm Tones, Cool Looks**

One shouldn't hesitate to use brushed white mouldings for only cool color pairings. Warm hues, jewel tones, and bolder saturated colors can be cooled down with the airiness of white. Here, the gold accent on 84280 can bring it all together, pulling out the earthy browns and sunny yellows while complementing the bright blue and greens.

# AVA



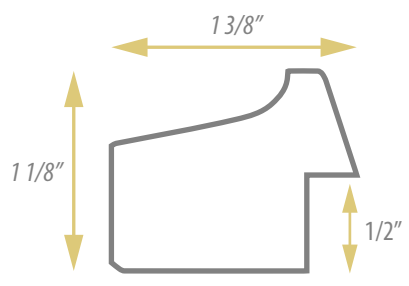
84282 1 3/8" reverse scoop • white & metallic brush with navy blue crest



84281 1 3/8" reverse scoop • white & metallic brush with silver crest



84280 1 3/8" reverse scoop • white & metallic brush with gold crest



**ΩMEGA**  
MOULDING COMPANY

# LOFT

*Loft is a collection of pewter and gold items that have been toned and heavily textured to convey the look of raw, unrefined galvanized steel and bronze. This industrial look is produced to work with artwork and interior spaces in a variety of ways that enhance and reinforce characteristics within the aesthetics of each.*

*Industrial style focuses on the three components of strength, gravity, and architecture. The Loft Collection draws from these within its profile shape, colors, and proportion. Two geometric profiles were designed; the broad flat panel of 84261 (gold), and 84262 (pewter) are 2 1/2" wide and are ideal for large format framing as well as artwork that calls for bolder presentation. The second profile's sharp peak emphasizes the architectural lines a bit more in the 1 7/16" wide silhouette of 84263 (gold) and 84264 (pewter). The rough pitted metallic look gives the grouping its heavy feel, thus successfully uniting the elements to produce the intended design aspiration.*

*Loft mouldings are beautifully showcased on modern art pieces, exhibiting similar attributes of geometry, simple form and line, construction, abstraction, and dimension. Scale and size are also factored into designing with Loft. Large installation spaces can be magnificently outfitted by its bold architectural specs, making Loft great for hotels, galleries, showrooms, and open plan living spaces.*

Art (right): *Oli Sobre Fusta*, Ricard Tovar c.2021 ▷



*The Loft Collection is handmade in Italy*

## ◁ In Great Shape

Geometric shapes aren't always as strict and cold as you would think. Even though they almost work on everything, the hard edges can be too defined on mouldings with opaque finishes. With Loft, you can expand the field of possibility and be creative in utilizing the collection for watercolors and oil paintings, or any other art application or subject matter that has blended pigments, softer lines, or subtle details. By way of its texture and variegated appearance, it can be used as an elegant solution for those pieces you may yet to consider.

◁ Art (left): *Les Coureurs*, Robert Delaunay c.1920

# LOFT



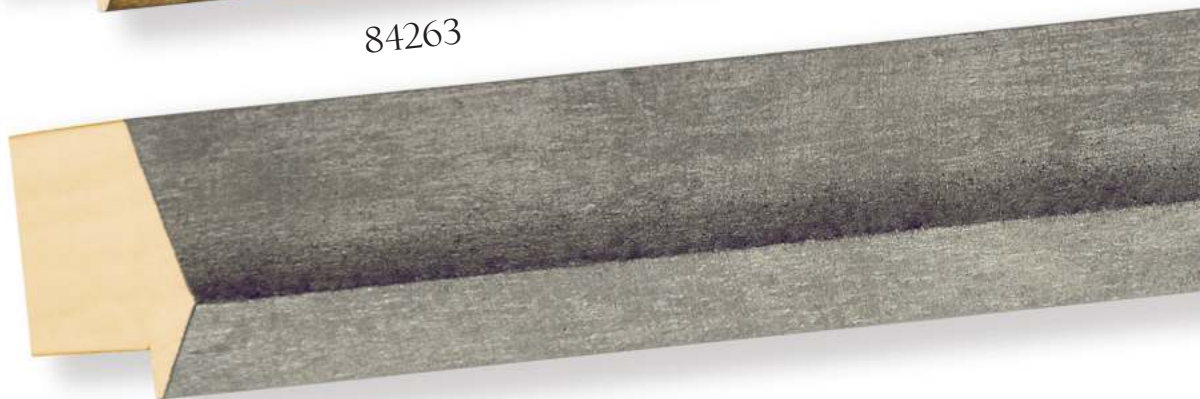
84261



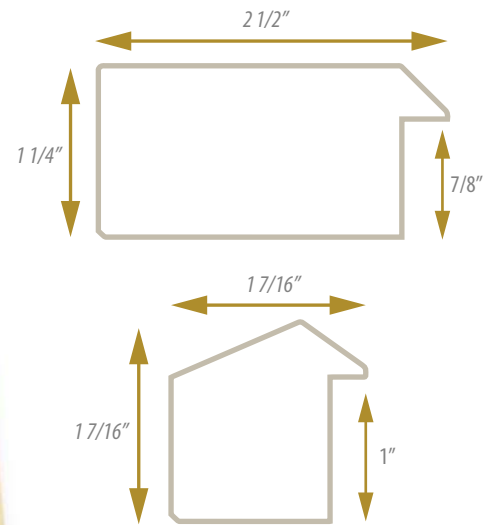
84262



84263



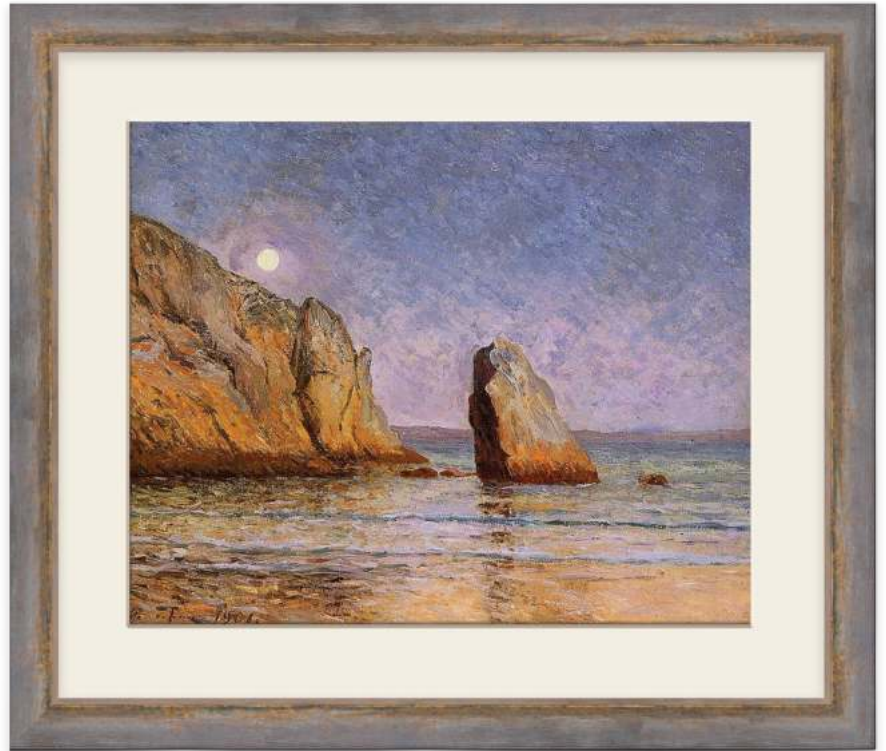
84264



# Volta

The Volta Collection is a neomodern collection, but it's timeless in that what you can design with it, is endless. Created to allow designers to produce elegant picture framing solutions, the collection uses soft muted hues that break away from neutral color schemes. This lends it to be used in a variety of interior environments as well as with more styles of art, as it blends warm and cool tones, and works simultaneously with both variegated and smooth textures. Geometric in shape, the profile can be easily integrated in modern and transitional interior design plans.

The overall look of Volta ranges from serene to dramatic. Softer subtle tones of silver in 84274 (fog grey), pewter in 84273, and champagne verdigris in 84271 (moss), invite the designer to explore more within the neutral palette. Meanwhile, the colorful contrast of 84269 (charcoal) uses black, copper, and oxidized silver; 84272 (blue) employs a color story of blues and violet upon gold, copper and pewter. Even gold, in 84270, (dark sand) is a visual treat surely to be used in any stretch of the imagination.



△ Art (above): *Moonrise*, Maxime Maufra c.1901



*The Volta Collection is handmade in Italy*

## ◁ A Finer Blend

With an attractive variety of color hues, textural tones and tinted metal patinas, Volta's unique mix of attributes works well on art from different eras. From the layered softness of impressionism (above), to more graphic illustrative work (left), this collection will inspire one's creative side to emphasize desired colors and details in the artwork that will elevate each piece to treasured status.



*The beveled nose surrounding the artwork is gilded, creating a brightly edged border that helps to draw the viewer's focus toward the subject.*

◁ Art (above): *Setting Intentions*, Duy Huynh c.2014



# Volta



84271



84272



84269



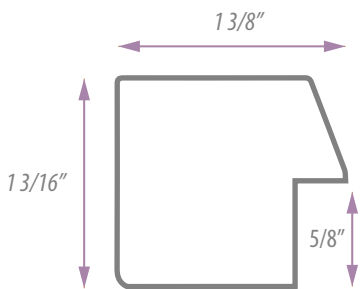
84270



84273



84274



**OMEGA**<sup>+</sup>  
MOULDING COMPANY



84308



84309



84310



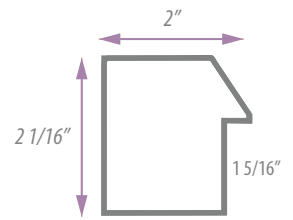
84307



84306

# Volta

New 2" items



# Volta

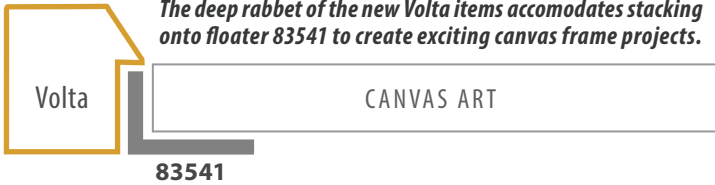
Five new items have been added to the popular Volta Collection, introducing a wider profile with a canvas-depth rabbet height to extend Volta's range of picture framing and design solutions. The collection has been launched alongside the new Arielle Collection, with Volta's deeper rabbet height designed to stack with Arielle profiles, and matching the collection's metallic tones and luster.

The overall look of Volta ranges from serene to dramatic. Softer subtle tones of silver in 84310 (fog grey), pewter in 84309, invite the designer to create more within the neutral palette. Meanwhile, the colorful contrast of 84306 (charcoal) uses black, copper, and oxidized silver; 84308 (blue) employs a color story of blues and violet upon gold, copper and pewter. Even gold, in 84307, (dark sand) is a visual treat surely to be used in many framing projects.



★ **Volta is a Floatmate profile!**

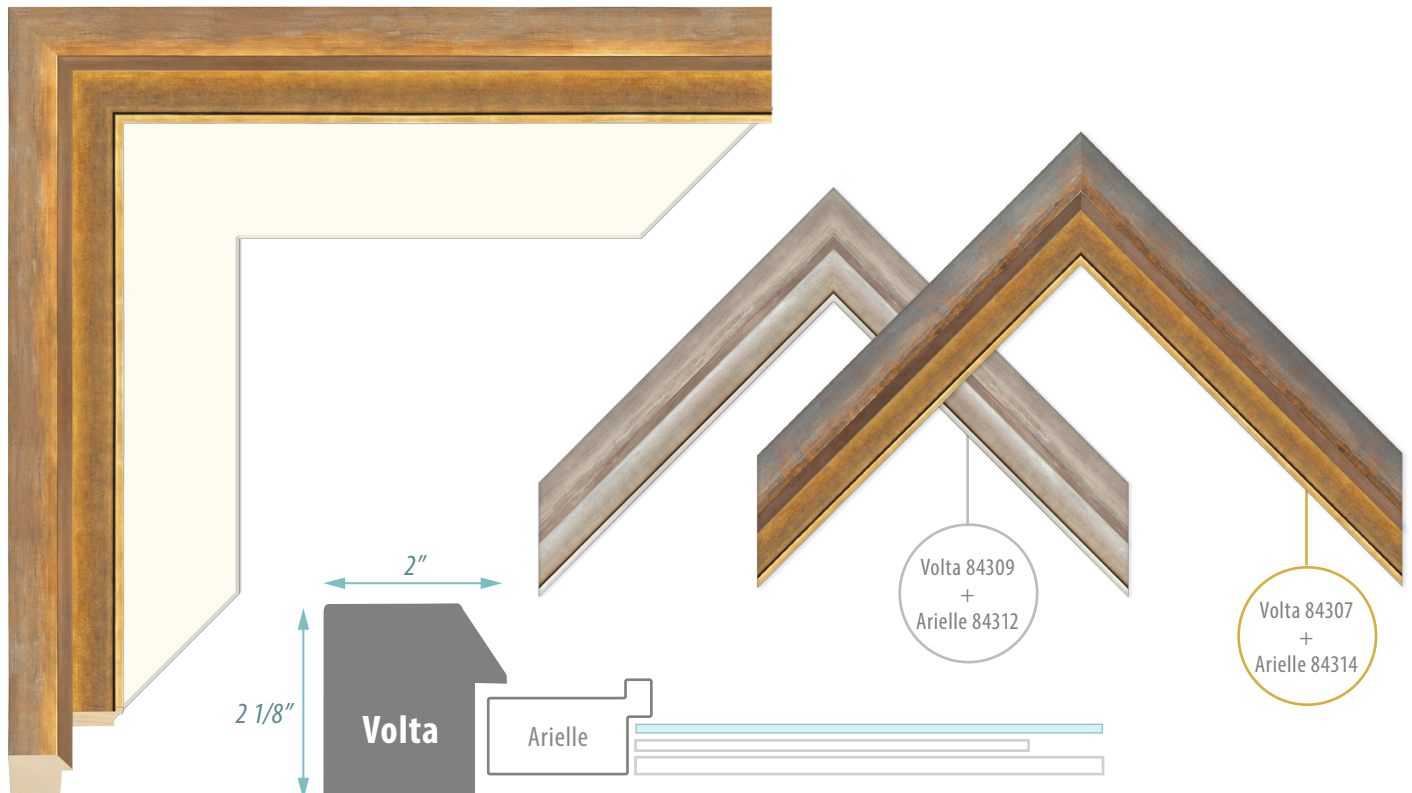
The deep rabbet of the new Volta items accommodates stacking onto floater 83541 to create exciting canvas frame projects.



### Canvas Stretchers & Liners



The new 1 5/16" canvas depth rabbet accommodates stretchers 79170, 83890, 83393, 83405, 79169, 83802 and stacks with every fabric liner in the entire Omega line.



Pairing Arielle with Volta invites creativity designing striking combinations as well as providing new solutions for framing larger pieces and wall mirrors.

# Gio

The Gio Collection is a colorful and whimsical collection of five items that is truly transitional and dynamic. Soft metal patinas are featured, creating contrasts and interesting plays of shadow and light. There are numerous tonal subtleties within each finish, allowing a designer to try multiple samples within this collection for the same piece, all depending on the eye of the beholder. A deep reverse swan profile leads to a flat cap top that creates a reflective plateau surrounding the artwork.

Gio's overall aesthetic is tranquil and refined but can be used for dramatic effect when creativity strikes. Light and ethereal 84275 (white-silver), and 84278 (slate-violet), are brilliant and soft, appealing for designing with pastel color palettes and impressionist style works. A blend of warm and cool is displayed on 84276 (beige-silver) with a terracotta weathered finish on silver. The earthy contrasts of 84277 (brown-gold) is more dramatic as is the stunning 84279 (black-gold). This collection is sure to be a favorite for designers who have an eye for the unique.

Art (right): *Breaking The Cycle*, Duy Huynh c.2020 ▷



The Gio Collection is handmade in Italy

## ◁ Multi-Use, Multi-Hues

While designing with Gio, one must know ahead of time to "expect the unexpected." There's something about those hues and reflections that makes one try them all. Whether you intend to be imaginative or practical, you'll find yourself in full designer mode. The finish is somewhat reminiscent of Venetian plaster or fresco where, depending on the light, can cast a different color on second glance. This will lead to innovative color decisions on mat board choices and for the more creative-minded, you will express your design skills to the fullest.

☆ Gio is a nice companion to the Volta Collection.

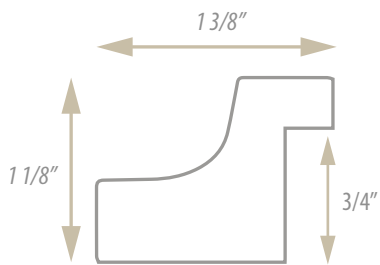
◁ Art (left): *Anemone*, William Morris c.1876



84276



84277



84278



84275



84279

**Gio**  
**ΩMEGA**

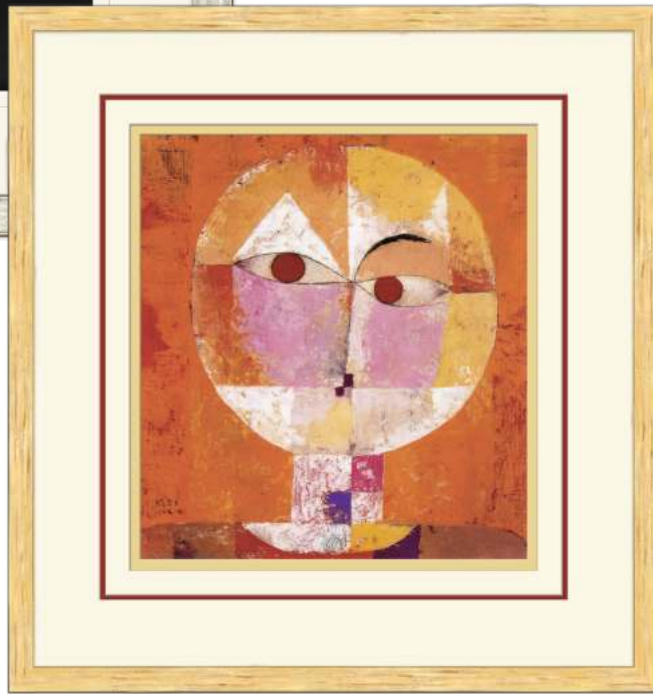


# GEHRY

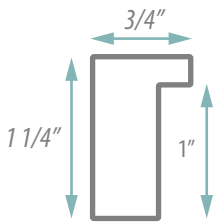


*Gehry is a classic modern collection with an industrial aesthetic, rendered in the textural complexity of grinded metal on a geometric profile. Plays of light are produced in the radial swirls and streaks and is the star of the show, introducing a new and unique finish for picture framing artwork in a variety of interior design schemes.*

*Five finishes equally showcase the coolness and warmth of metal; silver (84283), champagne (84284), and pewter (84285) are beautiful accompaniments to black and white photography, etchings, graphic art, and art with neutral tones. Copper (84286) and gold (84287) bring life to more colorful media and modern art, color photography, lithographs, and watercolors, as well as transitioning many genres of art into a single design theme, such as gallery walls, and framing art collections. Gehry's 1" rabbet allows for framing works on canvas and dimensional work requiring spacer and shadow box applications.*



The Gehry Collection is handmade in Italy



△ Art (Top left):  
**Butterfly** (pigment photograph)  
Mark Shaw, c.1950

◁ Art (left):  
**Senecio**  
Paul Klee, c.1922



Walt Disney Concert Hall · Los Angeles, California

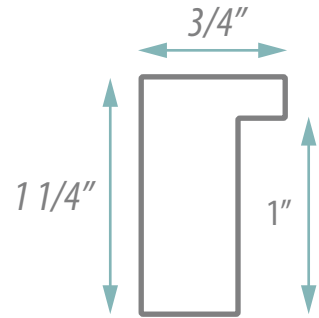


## ◁ Brightly Inspired

The Gehry collection pays homage to the beautiful polished steel architecture of Frank Gehry and the appealing brilliance of grinded metal artwork.

# GEHRY

**OMEGA**<sup>+</sup>  
MOULDING COMPANY



84283

84284



84287

84285

84286

**TRENDSETTER**  
TrendSetter Program Collection



**OMEGA**<sup>+</sup>  
MOULDING COMPANY

[WWW.OMEGAMOULDING.COM](http://WWW.OMEGAMOULDING.COM)

1-800-289-6634 • 1-800-BUY-OMEGA