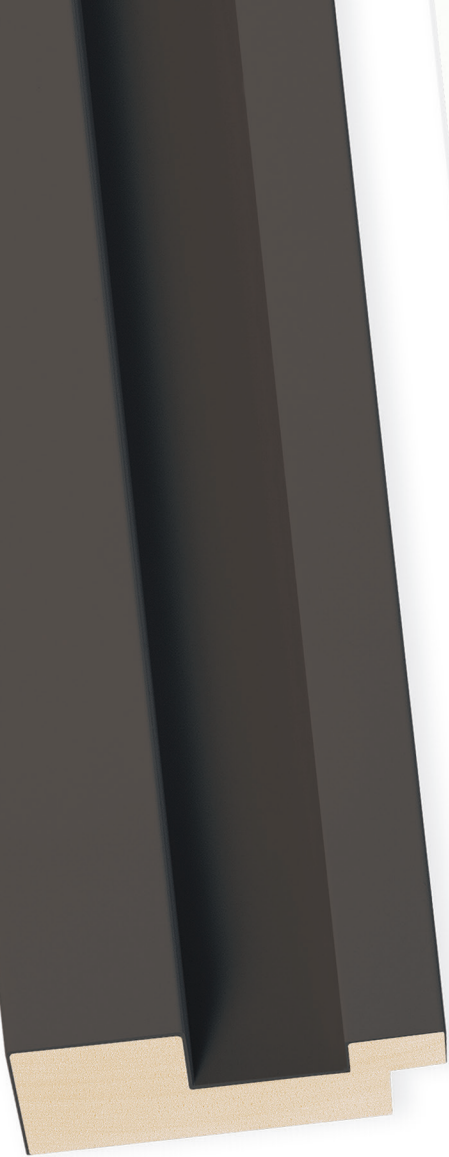


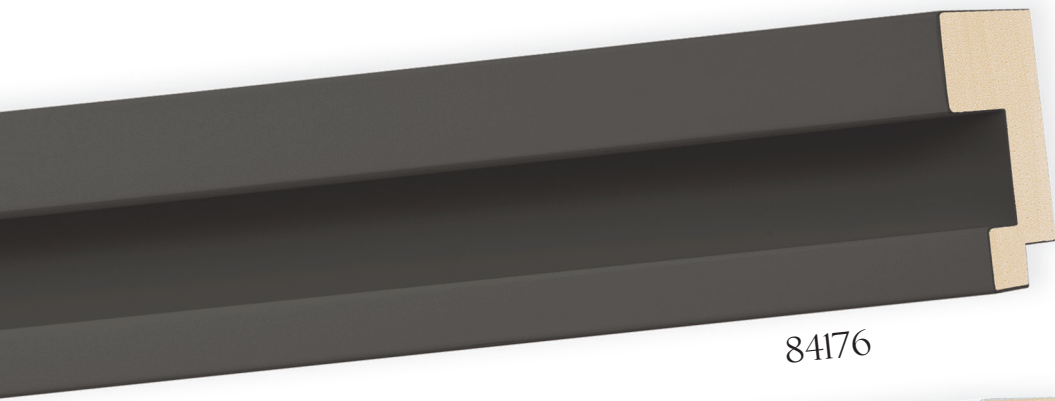
**ΩMEGA<sup>®</sup>**  
**EDGE**



84178



84179



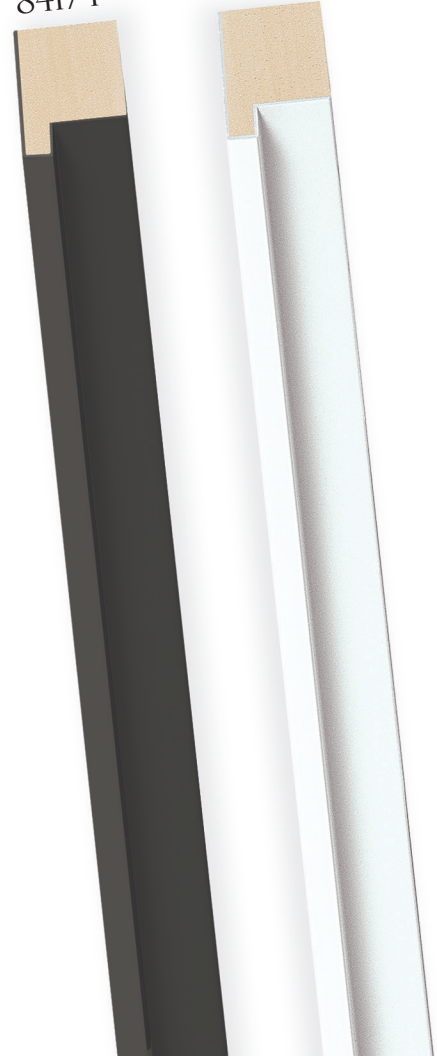
84176

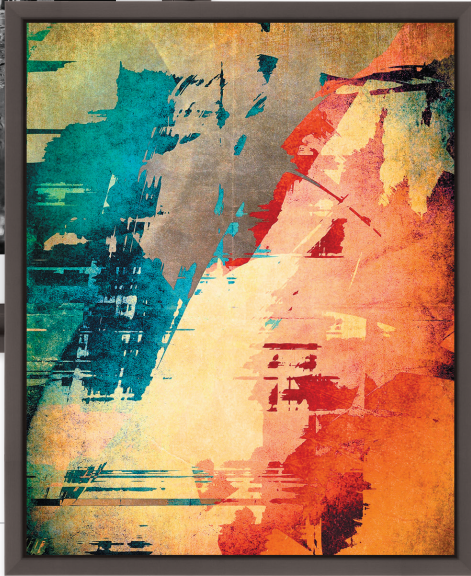


84177

84174

84175





# EDGE

Edge is a collection of multi-use modular mouldings that can be used to create standard traditional frames or to serve as floater frames for graphic arts media such as face mounted acrylic prints, and other panel mounted work. Available in both black and white finishes (wood mouldings) and in aluminum (extruded metal).

Profiles 84176-84177 (1 1/2") and 84178-84179 (2 1/4") are equipped with rabbets for traditional picture framing. The unique profile allows for mounting upon the front edge of the face (see diagram), allowing the raised back edge to surround the work.

Profiles 84174-84175 (9/16") delivers the slimmest, most minimal floater frame solution for panel mounted graphics in the line. When mounted flush-to-edge, the outside is sharply finished with a neat and narrow 5/32" profile face.



ART/GRAPHIC

Allows for traditional framing, equipped with rabbet  
5/16": 84175-84176 and 7/16": 84177-84178



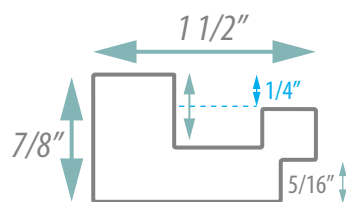
ART/GRAPHIC

Allows for up to 1/4" depth mounted graphic float mount  
1/2" (84175-84176) and 7/8" (84177-84178) surrounding edge

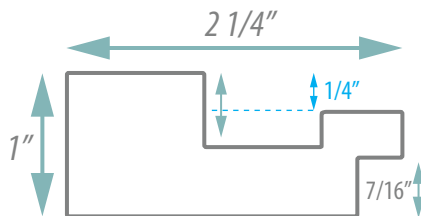


ART/GRAPHIC

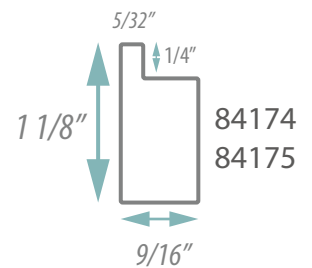
Allows for up to 1/4" depth mounted graphic float mount with  
super-slim 5/32" surrounding edge



84176  
84177



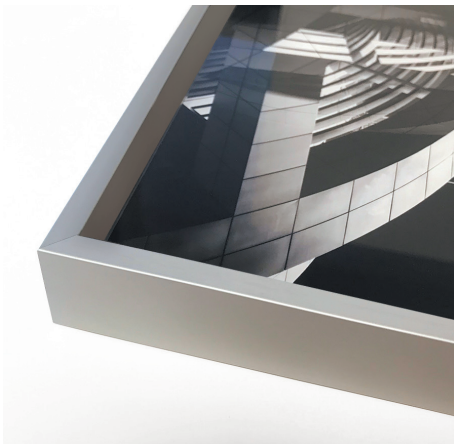
84178  
84179



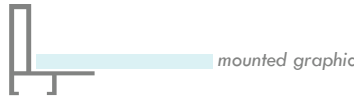
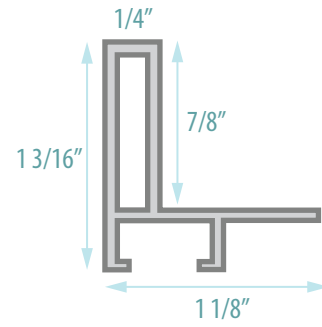
84174  
84175

# EDGE METAL

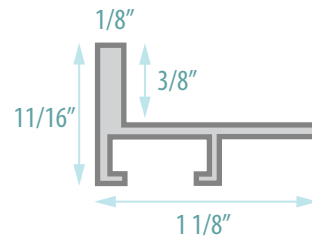
The Edge Collection's aluminum profiles are designed for constructing Graphic Arts Frames, creating framing solutions for face mounted graphics, signage and artwork for the Framing, Display and Interior Design industries. These frames provide the sleek, fine edges desired in the finishing and display of a variety of panel mounted media.



◀ **BF04300** (1/4", 6.35mm)  
 Thick panel edge/float frame  
 Mounted graphic (face mount) is adhered to the floater base. Can be mounted flush to edge, or with desired float space.



◀ **BF04178** (1/8", 3.175mm)  
 Thin panel edge/float frame  
 Mounted graphic (face mount) is adhered to the floater base. Can be mounted flush to edge, or with desired float space.



Hardware & Accessories  
 for **BF04300** & **BF04178**:



Corner Hardware  
 For joining metal frames.  
 1 frame & 100 frame packs.  
**BH0210** For 1 Frame  
**BH0210H** For 100 Frames

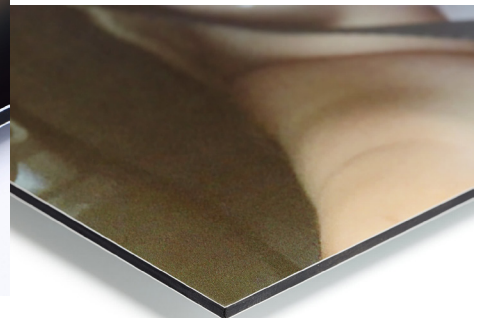
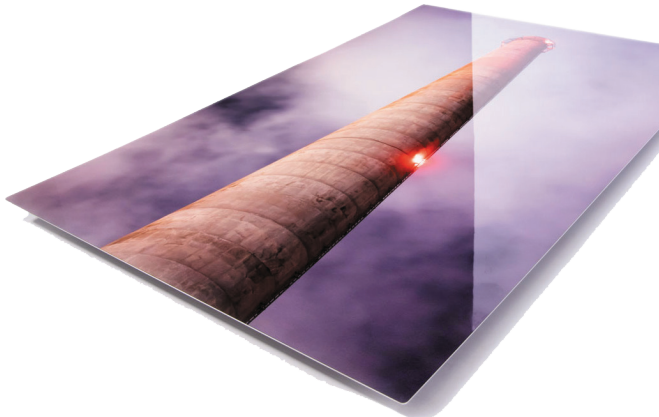


3M VHB Tape  
 High strength adhesive for  
 adhering panels to frames.  
**TVHB-1** 1"x36 yds.  
**TVHB-34** 3/4"x36 yds.

## Art & Graphics applications

Face mounting and printing and/or mounting on metal panels have been around for years, but thanks to new technologies this look has become one of the hottest mediums in the wall décor industry. In addition to providing a minimalist solution for a clean look for images mounted on acrylic or metal, many corporate customers are looking for a clean presentation on a single-use graphic printed or mounted on foam board that provides a clean, simple, professional edge view at a low price with minimal effort. The Edge profiles can be used for commercial signage and presentation graphics in addition to art on the wall.

Omega sells many items for this kind of framing including **standoffs**, **VHB 2 sided acrylic tapes** and all kinds of rigid substrates including **aluminum clad panels**.



Edge Collection metal floater frames are ideal for panel printed graphics like aluminum mounted prints, media mounted on dibond, acrylic face mounted graphics and work drymounted on foam board .



## Floater Frame Cutting Instructions

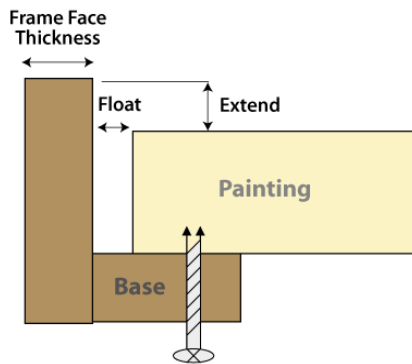
Omega Moulding offers several different sizes and profiles of floater frames. Some floaters have a single step and some have multiple steps. *See diagram below.* Floater frames are mainly used in framing canvas art. A regular frame has a lip that covers approximately  $\frac{1}{4}$ " of the art. The lip is what holds the art, mat, glass and backing into the frame. A floater frame gives the effect of the canvas floating within the frame.



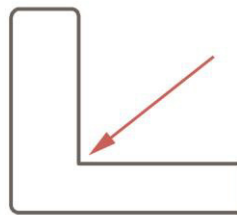
### Cutting Instructions:

Floater Frames are cut differently than regular frames. Regular frames are cut to the inside edge of the rabbet with the standard  $\frac{1}{8}$ " allowance. Floater Frames are cut to the inside edge of the bottom shelf **EXACT**.

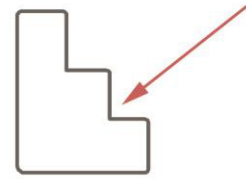
The customer is responsible to provide us with the size that they need cut including the float space they would like to give the painting. For example, 16x20 canvas and the customer requires  $\frac{1}{4}$ " of float space all around the canvas. The size of the floater frame would need to be  $16\frac{1}{2}$ " x  $20\frac{1}{2}$ " **exact**. See illustration below.



Floater cut points: to measurement (no allowance)



(standard floater)



(stepped floater)

### Edge Collection (used as Floater)

The new collection *Edge* can be used as a traditional frame or it can be used as a floater. Customers can choose to float their artwork on the top of the inside edge, thus acting the same as a floater frame.

